

PP1913 (Reviewed Jan. 2024)

Lentil Disease Diagnostic Series

Julie Pasche, Dry Bean and Pulse Crop
Pathologist, North Dakota State University

Audrey Kalil, Plant Pathologist,
Williston Research Extension Center,
North Dakota State University

Samuel Markell, Extension Plant Pathologist
North Dakota State University

NDSU

EXTENSION

North Central
IPM
Center

NDSU NORTH DAKOTA AGRICULTURAL
EXPERIMENT STATION

Pythium seed and seedling rot	PP1913-1
Fusarium root rot	PP1913-2
Rhizoctonia seed, seedling and root rot.....	PP1913-3
Aphanomyces root rot.....	PP1913-4
Anthracnose	PP1913-5
Ascochyta blight.....	PP1913-6
Botrytis gray mold.....	PP1913-7
Stemphylium blight	PP1913-8
Bacterial blight	PP1913-9
Powdery mildew.....	PP1913-10
White mold (Sclerotinia stem rot).....	PP1913-11
Pea enation mosaic	PP1913-12
Bean leaf roll.....	PP1913-13

Cover photo:

NDSU North Central Research Extension Center

This publication was supported by the U.S. Department of Agriculture's (USDA) Agricultural Marketing Service through grant 14-SCBGP-ND-0038 and the USDA National Institute of Food and Agriculture, North Central IPM Center project 2014-70006-22486.

NDSU EXTENSION

EXTENDING KNOWLEDGE >> CHANGING LIVES

NDSU Extension does not endorse commercial products or companies even though reference may be made to tradenames, trademarks or service names. NDSU encourages you to use and share this content, but please do so under the conditions of our Creative Commons license. You may copy, distribute, transmit and adapt this work as long as you give full attribution, don't use the work for commercial purposes and share your resulting work similarly. For more information, visit www.ag.ndsu.edu/agcomm/creative-commons.

For more information on this and other topics, see www.ag.ndsu.edu/extension

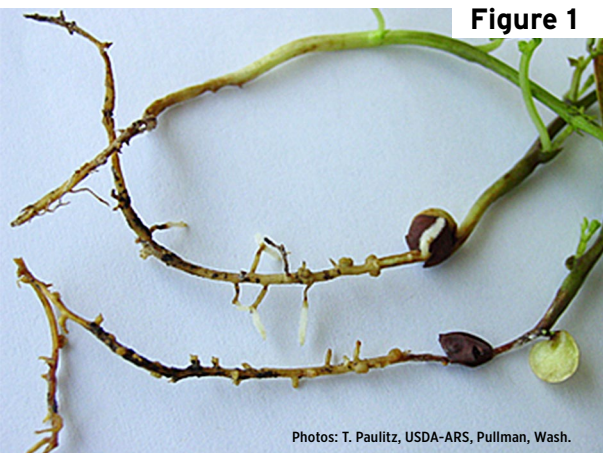
County commissions, North Dakota State University and U.S. Department of Agriculture cooperating. NDSU does not discriminate in its programs and activities on the basis of age, color, gender expression/identity, genetic information, marital status, national origin, participation in lawful off-campus activity, physical or mental disability, pregnancy, public assistance status, race, religion, sex, sexual orientation, spousal relationship to current employee, or veteran status, as applicable. Direct inquiries to Vice Provost for Title IX/ADA Coordinator, Old Main 201, NDSU Main Campus, 701-231-7708, ndsu.eoaa@ndsu.edu. This publication will be made available in alternative formats for people with disabilities upon request, 701-231-7881. 760-1-19; web-1-24



Pythium seed and seedling rot

Pythium ultimum, *P. irregulare*, *P. aphanidermatum*
and other *Pythium* species

Figure 1



Photos: T. Paulitz, USDA-ARS, Pullman, Wash.



Figure 2



Photo: T. Paulitz, USDA-ARS, Pullman, Wash.



Pythium seed and seedling rot

Pythium ultimum, *P. irregulare*, *P. aphanidermatum*
and other *Pythium* species

AUTHORS: Lyndon Porter, Timothy Paulitz and Kurt Schroeder

SYMPTOMS

- **Poor emergence, rotted seed with light brown root discoloration**
- **Stunted plants with yellow or purple leaves developing from the bottom**

FIGURE 1 - Brown/black discoloration and pruning of lateral and tap roots by *Pythium irregulare*

FIGURE 2 - Range of yellowing on plant foliage

FACTORS FAVORING DEVELOPMENT

- Cool, water-saturated or compacted soil and poor seed vigor

IMPORTANT FACTS

- Metalaxyl (mefenoxam)-resistant *Pythium* is present in some growing regions
- Effective seed treatments are available for metalaxyl-resistant and sensitive *Pythium*
- Avoid planting into wet or compacted soils
- Pathogen survives on plant debris and in soil
- Resistant varieties are not available
- Often occurs in complex with other root rots
- Can be confused with other root rots and water logging



Fusarium root rot

Fusarium avenaceum and other *Fusarium* species

Photo: K. Zitnick-Anderson, NDSU

Figure 1



Photo: K. Zitnick-Anderson, NDSU

Figure 2



Figure 3



Photo: L. Porter, USDA-ARS, Prosser, Wash.



Fusarium root rot

Fusarium avenaceum and other *Fusarium* species

AUTHORS: Audrey Kalil and Lyndon Porter

SYMPTOMS

- Poor emergence
- Wilting, stunting and premature death

FIGURE 1 - Brown to reddish-brown lesions on lower stems and roots caused by *Fusarium* infection

FIGURE 2 - Infected seedlings

FIGURE 3 - Yellowing progressing upward and premature death caused by *F. avenaceum* (diseased [middle/bottom] and healthy [top] roots)

FACTORS FAVORING DEVELOPMENT

- Soil compaction and plant stress
- Warm, moist soil (68 to 82 F)
- Short pea and lentil rotations

IMPORTANT FACTS

- Pathogen survives on plant debris and in soil
- Often occurs in complex with other root diseases
- Resistant varieties are not available
- Fungicide seed treatments may be recommended
- Can be confused with other root rots and water logging



Rhizoctonia seed, seedling and root rot

Rhizoctonia solani

Figure 1



Photo: K. Zitnick-Anderson, NDSU

Figure 2



Photo: K. Zitnick-Anderson, NDSU



Rhizoctonia seed, seedling and root rot

Rhizoctonia solani

AUTHORS: Jessica Rupp, Myron Bruce and Timothy Paulitz

SYMPTOMS

- Poor emergence
- Reddish-brown to dark brown lesions on roots and base of stem
- Secondary roots absent
- Plants are stunted and leaves turn yellow

FIGURE 1 - Sunken brown lesions on stem and root just below soil

FIGURE 2 - Moderate (top) to severe (bottom) Rhizoctonia root rot

FACTORS FAVORING DEVELOPMENT

- Wet, compacted or waterlogged soils

IMPORTANT FACTS

- Pathogen survives on plant debris and in soil
- Resistant varieties are not available
- Fungicide seed treatments may be recommended
- Often occurs in a complex with other root rots
- Can be confused with other root rots and water logging



Aphanomyces root rot

Aphanomyces euteiches

Figure 1



Photo: L. Porter, USDA-ARS, Prosser, Wash.

Figure 2



Photo: L. Porter, USDA-ARS, Prosser, Wash.



Aphanomyces root rot

Aphanomyces euteiches

AUTHORS: Lyndon Porter

SYMPTOMS

- Root rot may extend slightly above the soil line
- Leaf yellowing progresses from lower canopy upward
- Early season stunting and premature plant death

FIGURE 1 - Infected roots with caramel-brown root rot (R), compared with healthy roots (L)

FIGURE 2 - Infection moving up primary stem

FACTORS FAVORING DEVELOPMENT

- Cool, wet spring conditions
- High soil moisture
- Short rotations with peas and lentils

IMPORTANT FACTS

- Chickpea, cereals and faba bean are not important hosts
- Often occurs in a complex with other root rot diseases
- Can survive for many (20) years in soil without a susceptible host
- Seed treatments and genetic resistance are not effective
- Can be confused with other root rots and water logging



Anthracnose

Colletotrichum species

Figure 1



Photo: Michael Wunsch, NDSU

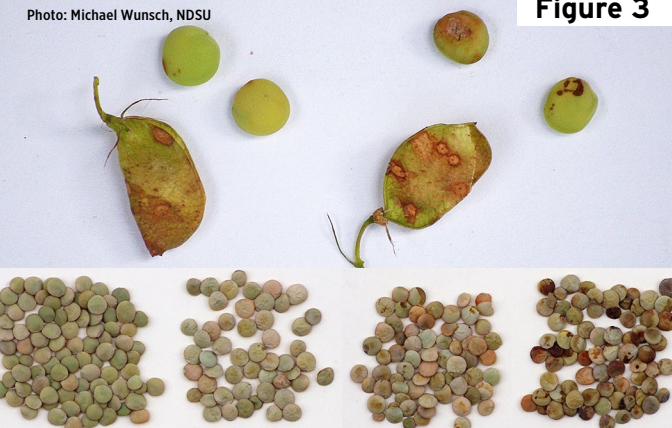
Figure 2



Photo: Michael Wunsch, NDSU

Photo: Michael Wunsch, NDSU

Figure 3





Anthracnose

Colletotrichum species

AUTHORS: Michael Wunsch and Julie Pasche

SYMPTOMS

- Light-brown stem lesions with a dark border
- Symptoms initiate at the base of plant and spread upward
- Patches of dead plants develop when stem lesions girdle plant

FIGURE 1 - Small black fungal resting structures (microsclerotia) within anthracnose lesions

FIGURE 2 - Severe anthracnose lesions coalescing

FIGURE 3 - Anthracnose-infected pods and discolored seeds

FACTORS FAVORING DEVELOPMENT

- Abundant rainfall during bloom and pod development
- Wide range of temperatures; 68 to 74 F optimal
- Dense canopy

IMPORTANT FACTS

- Seed quality declines with increasing anthracnose severity
- Varieties differ in susceptibility to anthracnose; none are resistant
- No-till increases degradation of pathogen resting structures
- Commonly confused with Ascochyta blight



Ascochyta blight

Ascochyta lentis



Photo: Michael Wunsch, NDSU

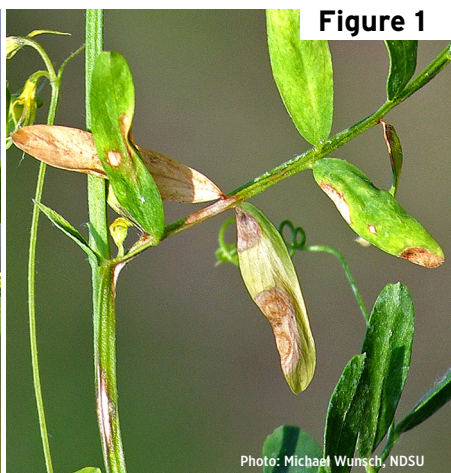


Figure 1

Photo: Michael Wunsch, NDSU



Photo: Michael Wunsch, NDSU

Figure 2



Photos: Michael Wunsch, NDSU

Figure 3





Ascochyta blight

Ascochyta lentis

AUTHORS: Michael Wunsch and Julie Pasche

SYMPTOMS

- Light brown leaf, stem and pod lesions with dark brown borders
- Small brown fungal fruiting structures (pycnidia) within lesions
- Disease lesions and/or pycnidia within lesions often exhibit a concentric ring pattern (unlike anthracnose)
- Flower and pod abortion

FIGURE 1 - Concentric ring pattern from pycnidia inside the light brown lesion

FIGURE 2 - Mid-canopy *Ascochyta* blight lesions

FIGURE 3 - Discolored seeds produced in pods with *Ascochyta* lesions

FACTORS FAVORING DEVELOPMENT

- Cool, wet weather; 50 to 68 F optimal
- Planting lentils immediately adjacent to a field where *Ascochyta* blight occurred on lentils the previous year

IMPORTANT FACTS

- *Ascochyta* blight is seed-borne and seed-transmitted; seed should be tested
- Managed with crop rotation (minimum two years out of lentils) and foliar fungicides
- Commonly confused with anthracnose



Botrytis gray mold

Botrytis cinerea, *B. fabae*

Figure 1



Photos: Michael Wunsch, NDSU

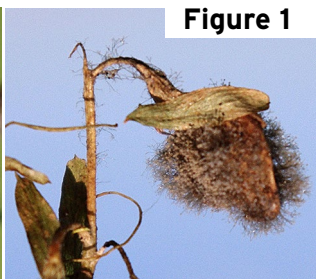


Photo: Michael Wunsch, NDSU

Figure 2





Botrytis gray mold

Botrytis cinerea, *B. fabae*

AUTHORS: Michael Wunsch and Julie Pasche

SYMPTOMS

- Gray fungal growth on diseased stems, leaves and pods in the lower canopy
- Plant tissue is light brown to bleached
- Plants become chlorotic, wilt and die when lesions girdle the lower stem
- Plant-to-plant spread of Botrytis is common, resulting in dead patches

FIGURE 1 - Gray sporulation on diseased tissues when relative humidity is high

FIGURE 2 - Dead patches in lentil field

FACTORS FAVORING DEVELOPMENT

- Dense crop canopies that restrict airflow
- High relative humidity and frequent rainfall
- Cool temperatures; 59 to 77 F optimal

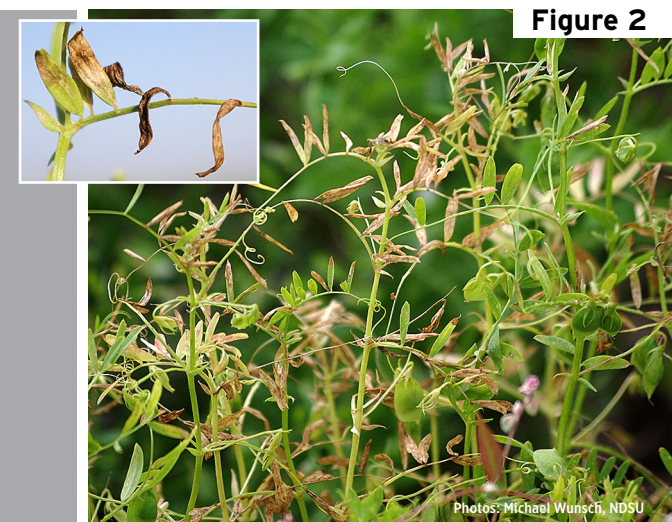
IMPORTANT FACTS

- Resistant varieties are not available
- Fungicides can be effective if applied preventatively
- Commonly confused with white mold and anthracnose



Stemphylium blight

Stemphylium botryosum





Stemphylium blight

Stemphylium botryosum

AUTHORS: Weidong Chen and Michael Wunsch

SYMPTOMS

- Leaflets may exhibit angular lesions at disease onset
- Disease is most severe on leaves but also infects pods, stems and petioles

FIGURE 1 - Tan to light brown lesions at disease onset

FIGURE 2 - Diseased leaflets that have become dark brown to gray due to pathogen sporulation under high relative humidity

FIGURE 3 - Defoliated plants that have shed diseased leaves

FACTORS FAVORING DEVELOPMENT

- Extended periods of high relative humidity in the last third of the growing season
- Warm temperatures; 77 to 86 F optimal

IMPORTANT FACTS

- Red lentils are generally more susceptible than green lentils
- Managed with fungicides and partially resistant varieties
- Can be confused with nutrient deficiencies (such as low nitrogen) or plant senescence



Bacterial blight

Pseudomonas syringae pv. *syringae*

Photo: F. Mathew, South Dakota State University

Figure 1



Photo: R. Harveson, University of Nebraska

Figure 2





Bacterial blight

Pseudomonas syringae pv. *syringae*

AUTHORS: Febina Mathew, Bob Harveson and Bright Agindotan

SYMPTOMS

- Lesions observed on all above-ground plant parts
- Initial lesions are water-soaked and become necrotic through time
- Bacteria may ooze from lesions under high-humidity conditions

FIGURE 1 - Brown, circular and translucent foliar lesions

FIGURE 2 - Bacterial ooze from pod lesions

FACTORS FAVORING DEVELOPMENT

- Warm temperatures
- High humidity or moisture on leaves
- Hail

IMPORTANT FACTS

- Bacteria can be spread by rain, wind and mechanical means
- *P. syringae* pv. *syringae* can cause disease on soybean, dry edible beans and other legumes
- Physical damage (such as hail) can facilitate infection and spread
- Fungicides are not effective
- Planting infected seed can increase disease risk
- Can be confused with *Ascochyta* blight or anthracnose



Powdery mildew

Erysiphe pisi and *Leveillula taurica*



Figure 1

Photo: L. Porter, USDA-ARS, Prosser, Wash.



Figure 2

Photo: L. Porter, USDA-ARS, Prosser, Wash.



Figure 3

W. Chen, USDA-ARS, Pullman, Wash.



Powdery mildew

Erysiphe pisi and *Leveillula taurica*

AUTHORS: Lyndon Porter and Weidong Chen

SYMPTOMS

- **Most visible starting at flowering and later in the season**
- **Infected leaves can become chlorotic/necrotic and curled**
- **Infection begins as small spots that enlarge quickly and cover plant surfaces**

FIGURE 1 - Early infection - white “powdery” spots (yellow arrows)

FIGURE 2 - Leaf and stem surfaces covered with powdery mildew

FIGURE 3 - Feltlike white fungal growth

FACTORS FAVORING DEVELOPMENT

- Late planting
- Conditions limiting sunlight
- Temperatures of 59 to 77 F are optimal

IMPORTANT FACTS

- Pathogen can be soil-borne, seed-borne and wind-dispersed
- Fungicides may be effective if applied early in disease development
- Crop rotation is important
- Lentil varieties have differing levels of resistance
- Can be confused with white mold and the fungal growth of saprophytes or other pathogens



White mold (*Sclerotinia stem rot*)

Sclerotinia sclerotiorum

Photo: W. Chen, USDA-ARS, Pullman, Wash.

Figure 1



Photo: L. Dighans, Pro Co-op Agr Center, Scobey, Mont.

Figure 2



Photo: W. Chen, USDA-ARS, Pullman, Wash.

Figure 3



Photo: W. Chen, USDA-ARS, Pullman, Wash.

Figure 4



White mold (*Sclerotinia stem rot*)

Sclerotinia sclerotiorum

AUTHORS: Mary Burrows, Weidong Chen and Michael Wunsch

SYMPTOMS

- First observed as water-soaked lesions
- Lesions enlarge and become bleached
- White fluffy fungal growth may appear under high humidity
- Hard, black sclerotia may appear late in the season
- Wilting

FIGURE 1 - Dead patches of plants

FIGURE 2 - White, fluffy fungal growth on leaves and stems

FIGURE 3 - Bleached lesions with white fungal growth

FIGURE 4 - Dark, hard fungal structures (sclerotia) on the soil surface (yellow arrows)

FACTORS FAVORING DEVELOPMENT

- Cool, wet conditions after canopy closure
- Short rotations with susceptible crops
- Lush canopy

IMPORTANT FACTS

- Sclerotia survive in the soil for several years
- Pathogen infects most broadleaf plants
- Fungicides can be effective if applied preventatively
- Can be confused with powdery mildew, nutrient deficiencies (low nitrogen) or plant senescence

Card 11 of 13



Pea enation mosaic

Pea enation mosaic virus (PEMV)

Figure 1



Photo: W. Chen, USDA-ARS, Pullman, Wash.

Figure 2



Photo: W. Chen, USDA-ARS, Pullman, Wash.

Figure 3



Photo: W. Chen, USDA-ARS, Pullman, Wash.



Pea enation mosaic

Pea enation mosaic virus (PEMV)

AUTHORS: Lyndon Porter, Bright Agindotan and Kevin McPhee

SYMPTOMS

- **Small, circular to elongated translucent spots or streaks on leaves**
- **Vein clearing**
- **Stunted growth and malformed pods**

FIGURE 1 - Twisted and malformed leaves

FIGURE 2 - Leaf mottling

FIGURE 3 - Leaf mottling

FACTORS FAVORING DEVELOPMENT

- Presence of aphid vectors, including pea, cowpea, green peach, potato or foxglove
- Movement of aphids from virus-infected overwintering hosts in the spring or alfalfa fields during cuttings

IMPORTANT FACTS

- Can infect chickpea, pea, faba bean, vetch, crimson clover and lambsquarters
- PEMV is not seed-transmitted
- No known resistant varieties
- Insecticides applied to manage aphid vector may help reduce secondary spread
- Can be confused with other viruses or damage from herbicides or thrips



Bean leaf roll

Bean leaf roll virus (BLRV)



Figure 1

Photo: B. Agindotan, Montana State University, Bozeman



Figure 2

Photo: B. Agindotan, Montana State University, Bozeman



Bean leaf roll

Bean leaf roll virus (BLRV)

AUTHORS: Bright Agindotan and Lyndon Porter

SYMPTOMS

- Yellowing and stunting
- Small leaves

FIGURE 1 - Early leaf yellowing symptoms

FIGURE 2 - Advanced stage of yellowing
(Infected [L, R] and healthy [C])

FACTORS FAVORING DEVELOPMENT

- Presence of other BLRV-infected legume crops and weeds
- Presence of aphid vectors, including pea, cowpea, potato and vetch
- Movement of aphids from alfalfa fields during cuttings

IMPORTANT FACTS

- Leaf rolling absent
- BLRV is not seed-transmitted
- BLRV infects pea, chickpea, lentil, alfalfa and other legumes
- Insecticides applied to manage aphid vectors may help reduce secondary spread
- Resistant varieties may be available
- Can be confused with nutrient deficiencies (low nitrogen) or plant senescence